



CIUDADES POR LA NATURALEZA

Repensando los vínculos urbano-rurales para las personas y la biodiversidad

A PBOT focused rural-urban symbiosis

Cundinamarca, Colombia

Arq. Msc. Daniel Arriaga Salamanca



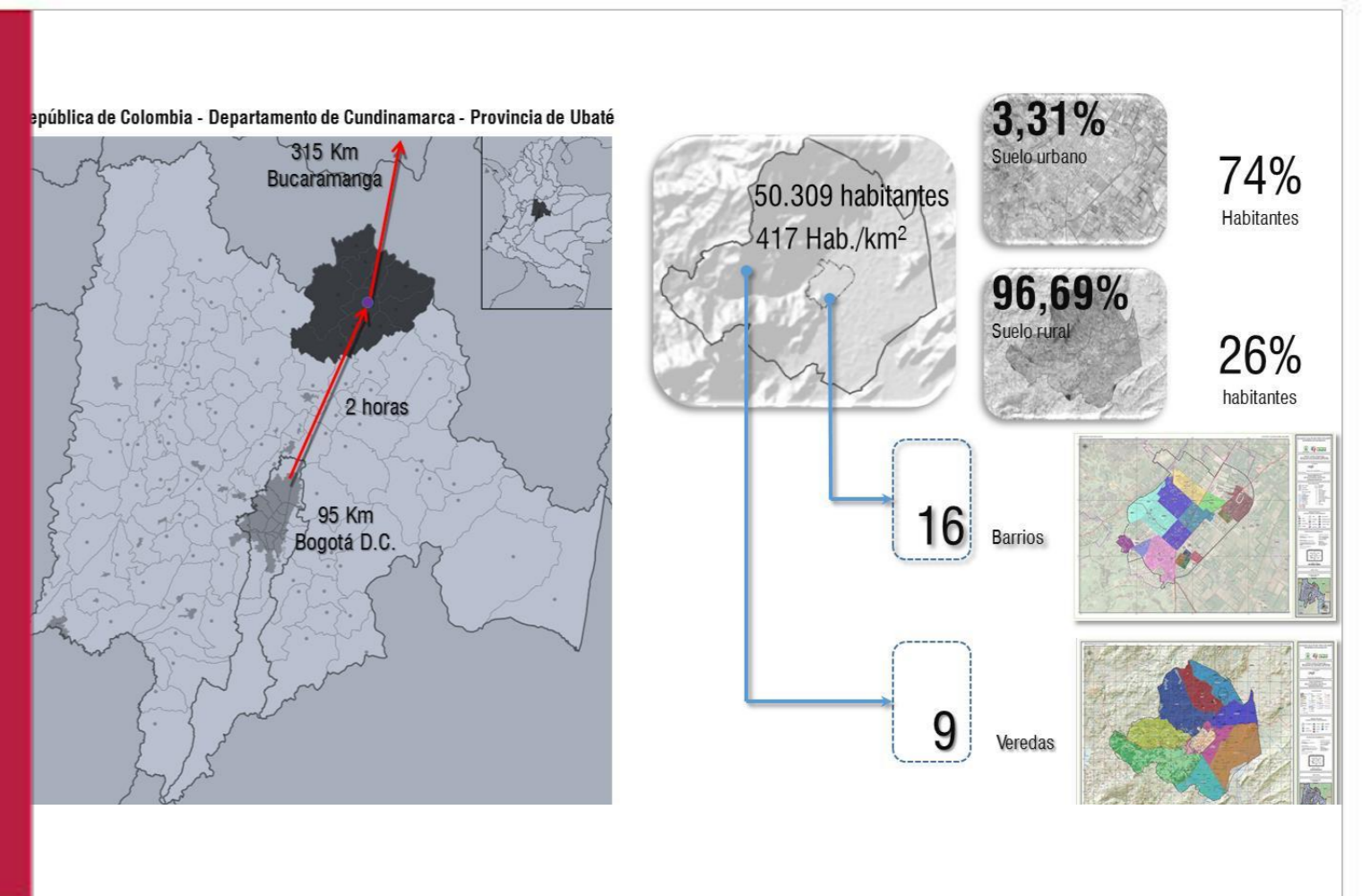
Background

MAIN CHALLENGES:

- Changes in climatic conditions.
- Changes in agricultural productivity.
- Changes in the ubatenses' culture.

CITY PROFILE

- 50,309 inhabitants
- 417 Inhab/km²; 16 neighborhoods; 9 villages
- 3,31% urban land with 74% of inhabitants
- 96.69% rural land with 26% of inhabitants



Approach



What is being done?

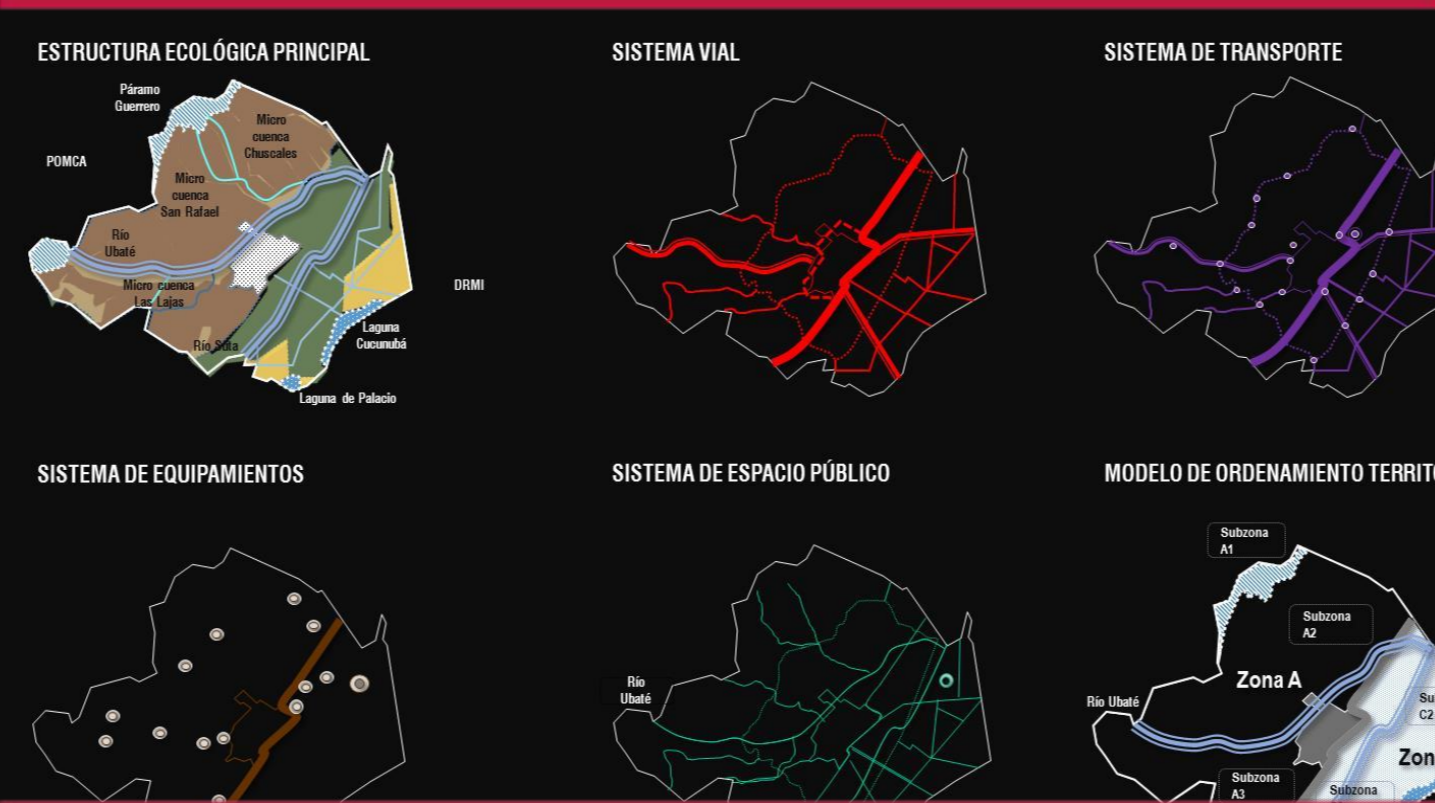
- Regional-urban and municipal-urban integration.
- Ecosystem services, water conservation and food security -SÉCASA-
- IUCN Global Standard for: SbN, SdN and SiN (2020).

What was its starting point?

- Short term (4 years), medium term (8 years) and long term (12 years) 2024-2036.
- 4 territorial strategic axes:
 - Protection and conservation of nature.
 - Promotion of knowledge and information.
 - Subregional center
 - Ecotourism.



Methodology

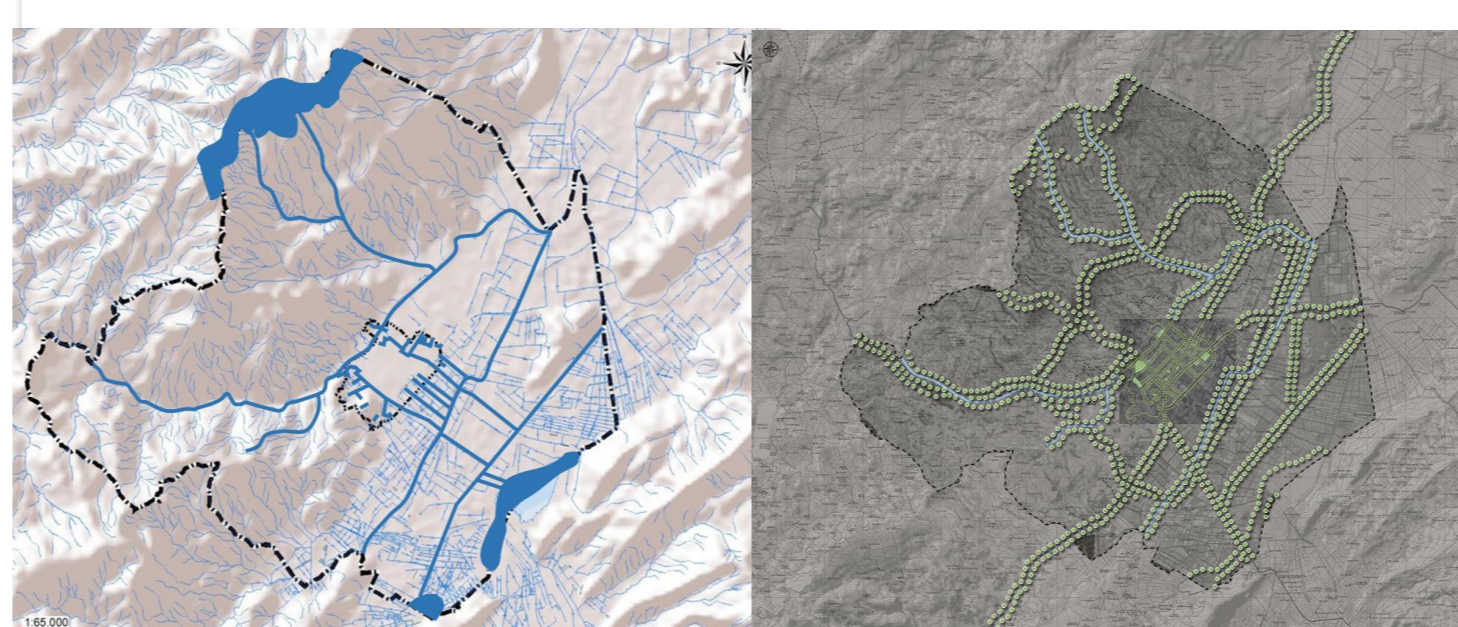


Biodiverse and Resilient Cities in Latin America and the Caribbean, IDB (2020).

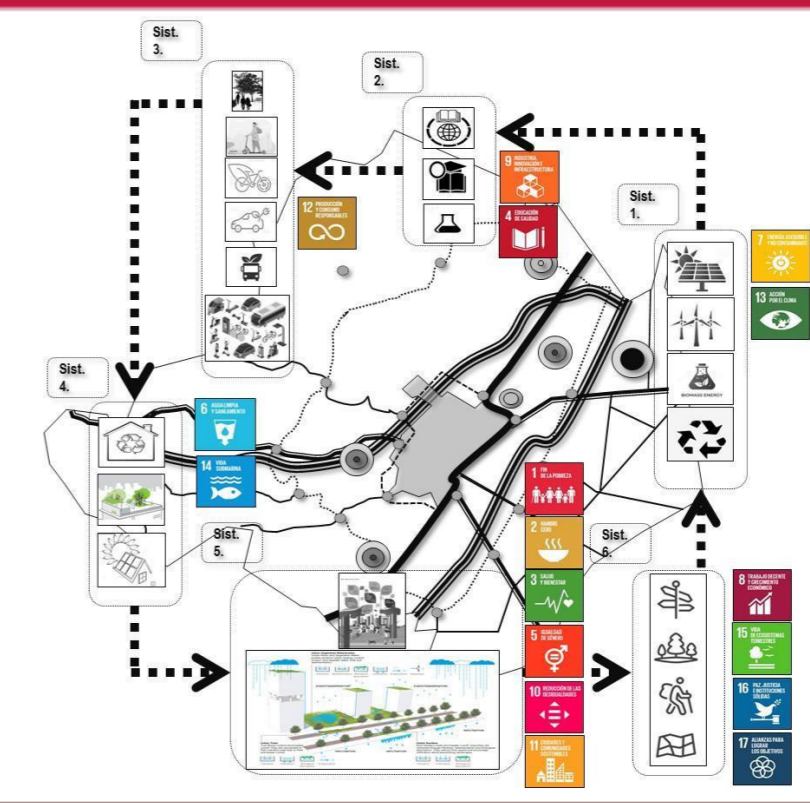
The mayor's office and its government cabinet had the initiative.

Financing:

- Own resources.
- Transfers from the nation.
- Cooperation.



Outcomes



What has been achieved?

- Integration of society in a common purpose.
- Awareness of the cycle of ecosystem services.

Next steps

- Prepare detailed studies and designs.
- Carry out the prioritized projects.
- Take advantage of the economic boom in the region.
- Immersion in the new global approach to alternative energies and sustainable cities.
- Anticipate the future.

Lessons learned

- The participation of the whole community, both young and older people.
- Involvement of all public and private actors and sectors.
- To take advantage of previous processes, information and projects; not to ignore what has already been done.
- To be more didactic and pedagogical.
- To inspire and have very committed, daring and much more innovative teams.
- Inspire neighboring municipalities to join in terms of the sub-region.
- To summon the community to join, cooperate and build collectively.