

Polycentric La Paz



La Paz, Bolivia

Eng. María del Carmen Rocabado Miranda
Municipal Planning Secretary
Autonomous Municipal Government of La Paz

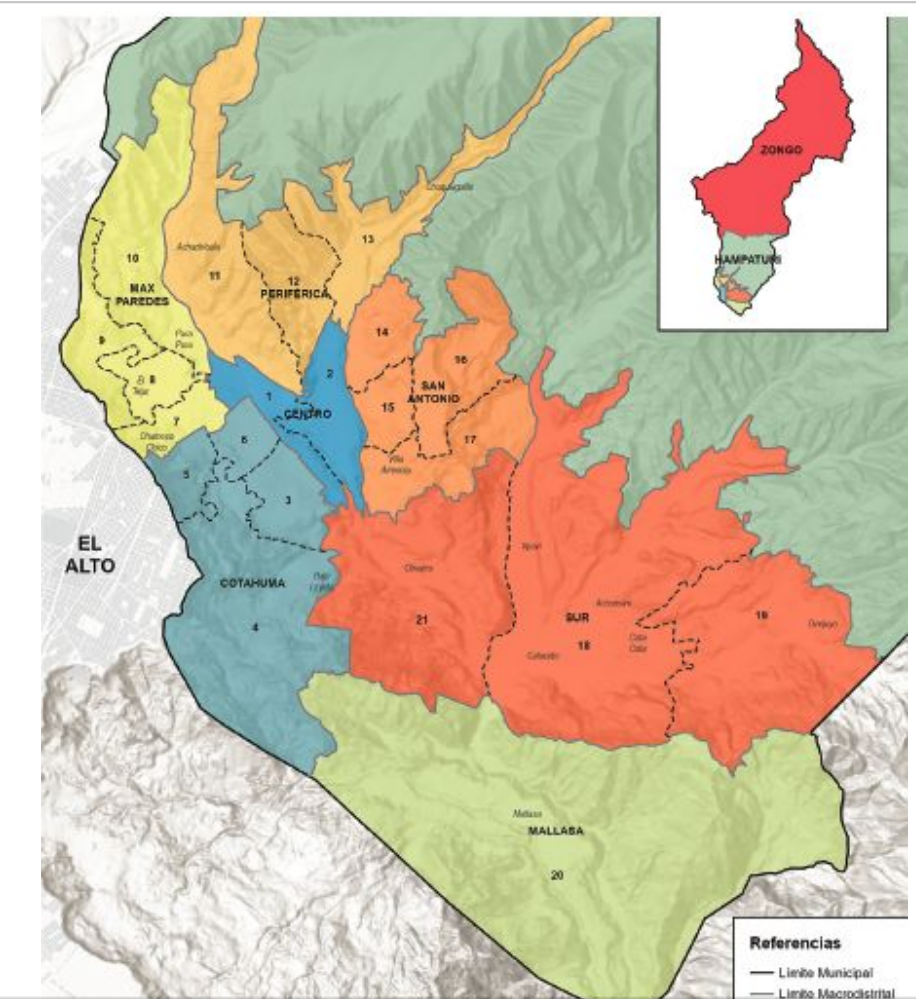
Background

MAIN CHALLENGES:

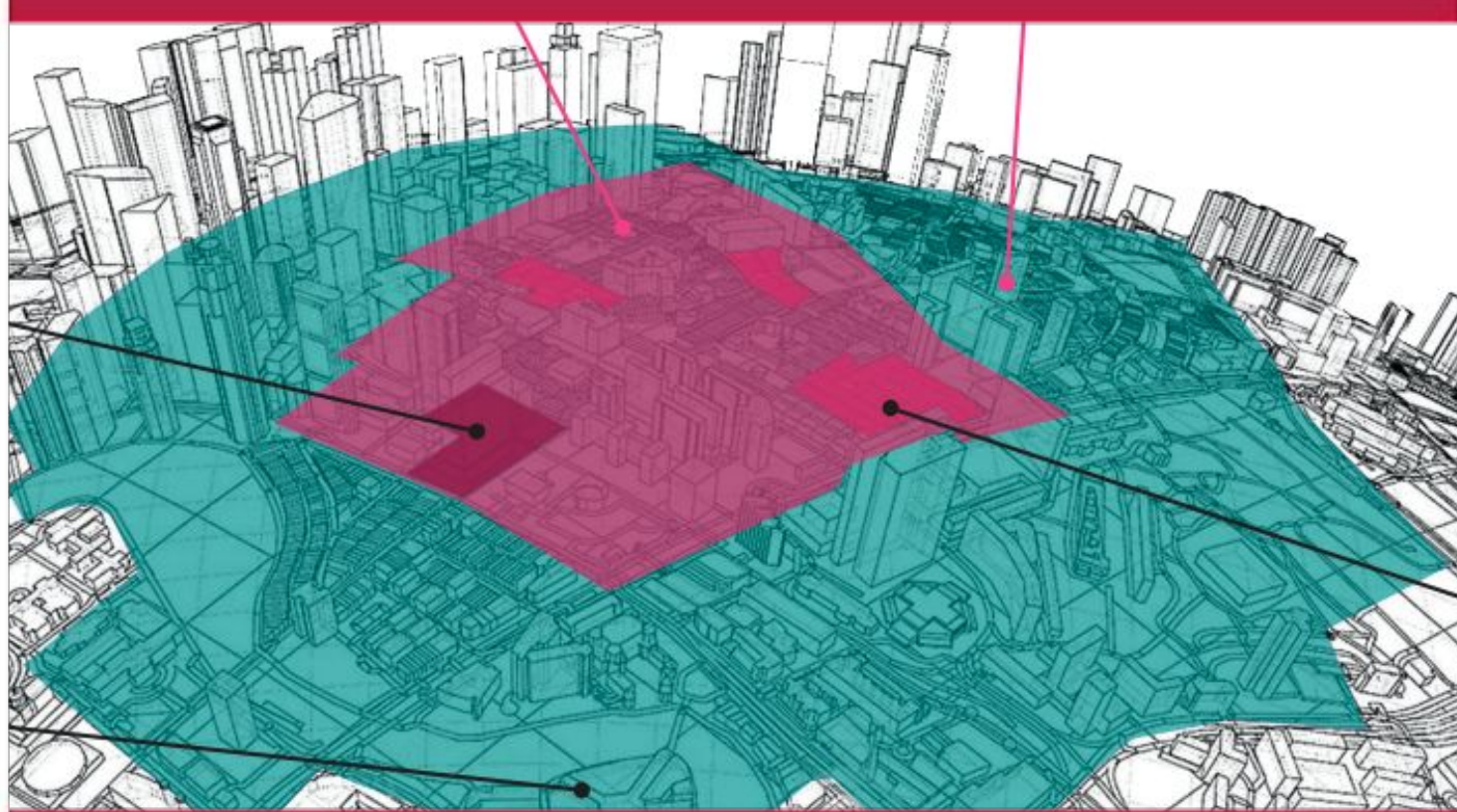
- Exponential and disorderly growth of human settlements (urban/rural edge zone).
- Unplanned configuration of multiple urban centers.
- Underdeveloped territorial development model.

LA PAZ PROFILE

- 978,210 inhabitants / 3,036 Km²



Approach

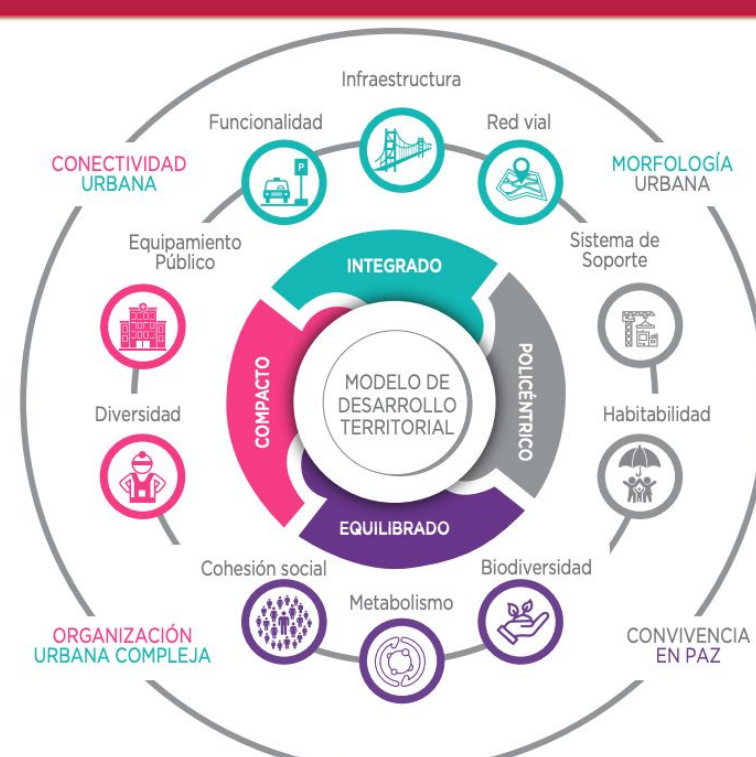


What is being done?

- Implementation of the territorial development model for a compact, integrated, balanced and polycentric city.
- Final technical design studies for the Mallasa urban center (expansion area).
- Urban expansion area linked to rural areas through eco-efficient projects, relationship with food systems, economic and ecological corridors.
- Designs based on mitigation actions (carbon footprint), adaptation (water footprint) and green footprint (urban-rural link).

What was the starting point?

- Municipal Law on Urban Centralities (2016).



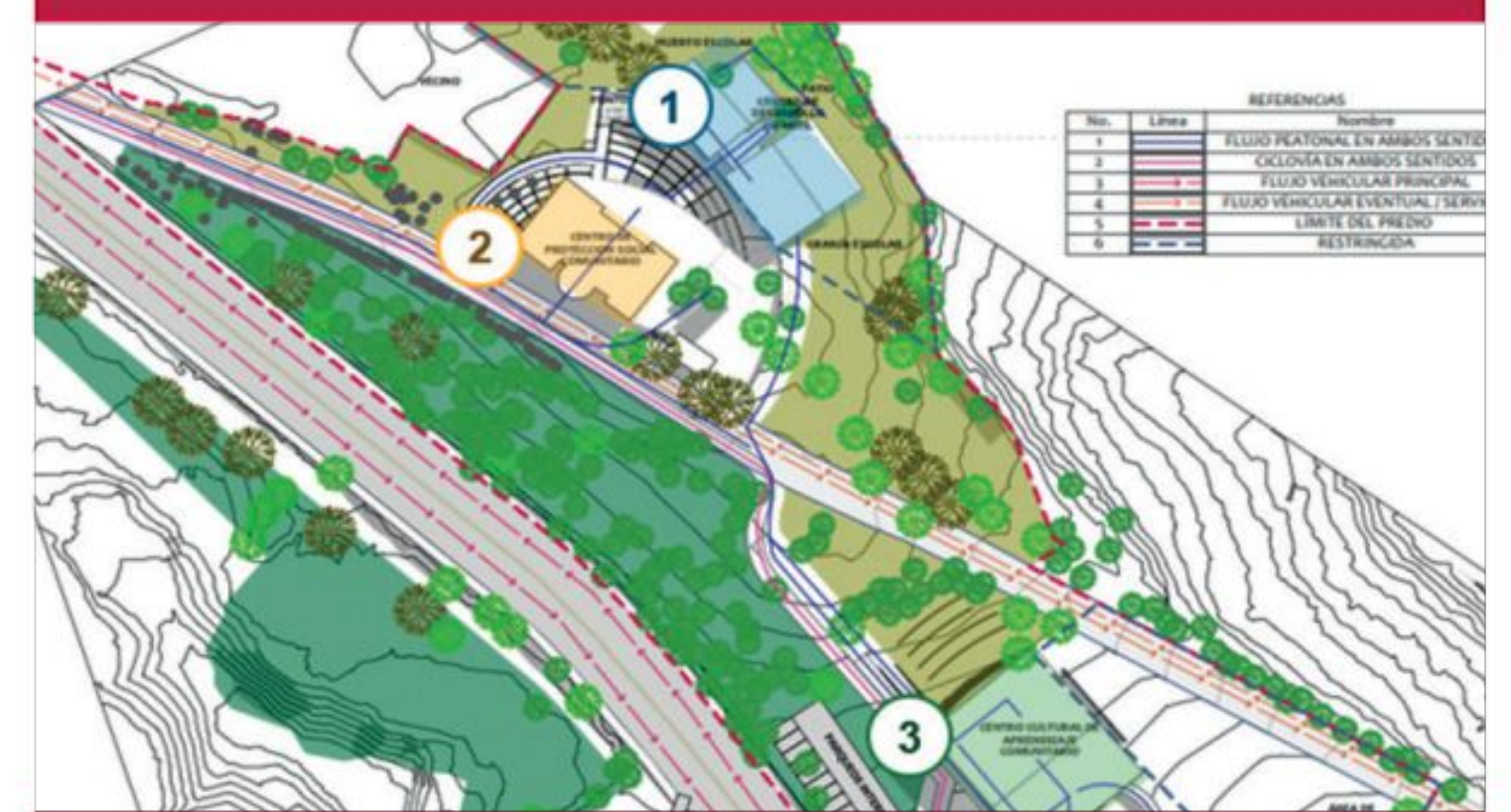
Methodology



- Participatory processes (competitions) for the identification of projects around urban centers; socio-economic, socio-cultural and socio-environmental analysis of the territory; technical engineering designs for infrastructure and complementary areas.
- The program is led by the Municipal Secretariat of Planning and seeks, based on public-private partnerships, that private actors make the investments.
- The first stage (up to the EDTP) was supported by Technical Assistance, financed by CAF-Development Bank of Latin America.



Outcome



What have they achieved?

- Deconcentration and optimization of municipal services through the consolidation of the Urban Centers: cadastre, approval of plans, construction permits, real estate and vehicle taxes, among others.

Next steps

- The goal is to achieve an integrated and balanced territory, taking Mallasa as a pilot, where an efficient closure of the landfill was achieved.

Lessons learned

- Construction of a territorial development model to guide actions.
- Analysis and evaluation of urban data is vital to establish the model's strategic guidelines.
- Establishment of participatory spaces for the identification of projects linked to the needs of the population.
- Optimization of the design time of the technical studies of the centralities.
- Model for the configuration of urban centers that could be useful in other cities with accelerated urban expansion processes.